



Parts List

A CPU Water Block

- A-1 BPTA-CPUMS-V2-SKA1 pc
- A-2 Intel Mounting Bracket1 pc
- A-3 Backplane assembly1 set

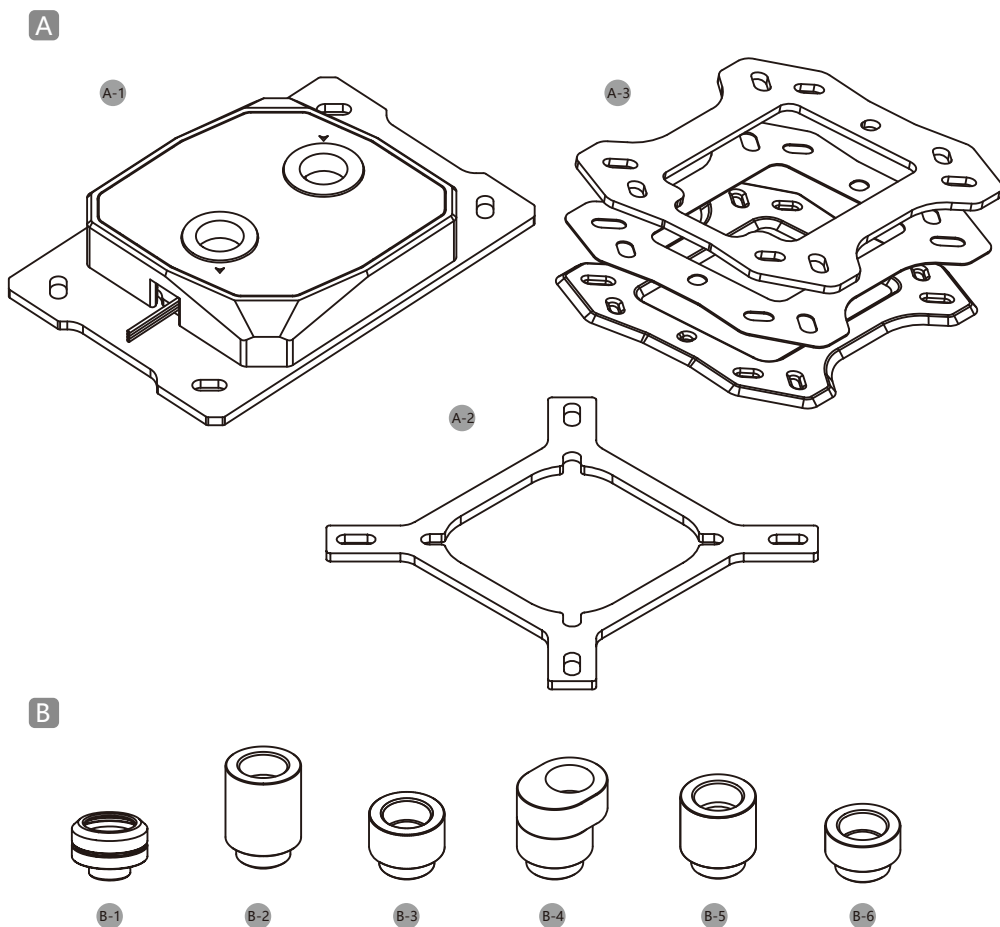
B Fittings

- B-1 BPTA-DOTFH16224 pcs
- B-2 TA-F61.....2 pcs
- B-3 BPTA-F95.....2 pcs
- B-4 BP-RIGOS5.....2 pcs
- B-5 TA-F602 pcs
- B-6 TA-F402 pcs

C Accessory

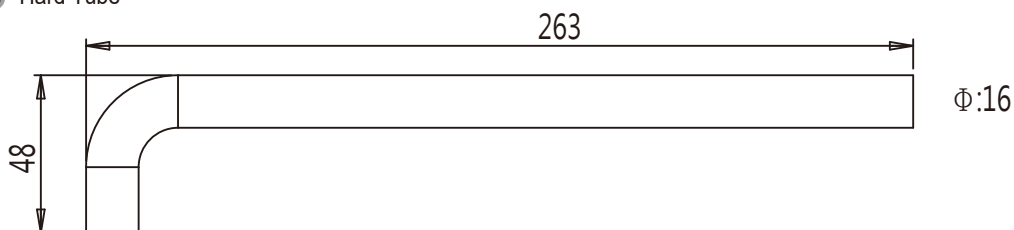
- C-1 Hard tube2 pcs
- C-2 Fitting + soft tube1 pc
- C-3 CPU set

SCM3FL20
SPRING
SCM3F6
1mm Spacer
Back Pad
Paste Pad
Metal Backplane
M3x32mm Screw
SC6-32M3
Nylon cup washer



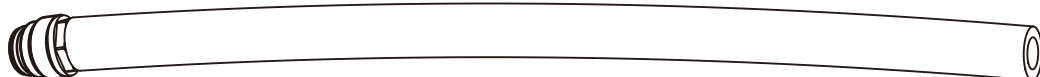
C

C-1 Hard Tube



※ The allowable variance in tube length is $\pm 2\text{mm}$

C-2 Fitting + soft tube



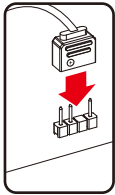
I. AMD Motherboard system

**AMD SOCKET 939 / 754 / 940
AMD SOCKET AM4
AMD SOCKET AM3 / AM3+
AMD SOCKET AM2 / AM2+
AMD SOCKET FM1 / FM2+**

Bitspower Fan and DRGB RF Remote Controller Hub (Not included) are now available at microcenter.com

DRGB PIN on ❶ Motherboard or ❷ other equipment.

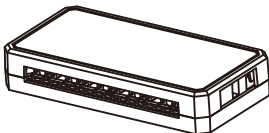
❶



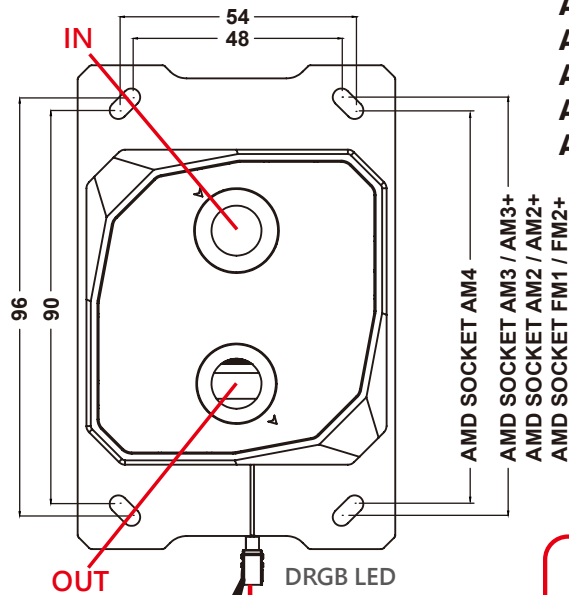
Motherboard

❷

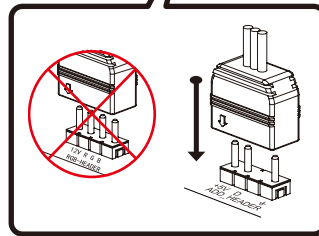
➔ BPTA-RFCHUB



Fan and DRGB RF Remote Controller Hub (Not included)



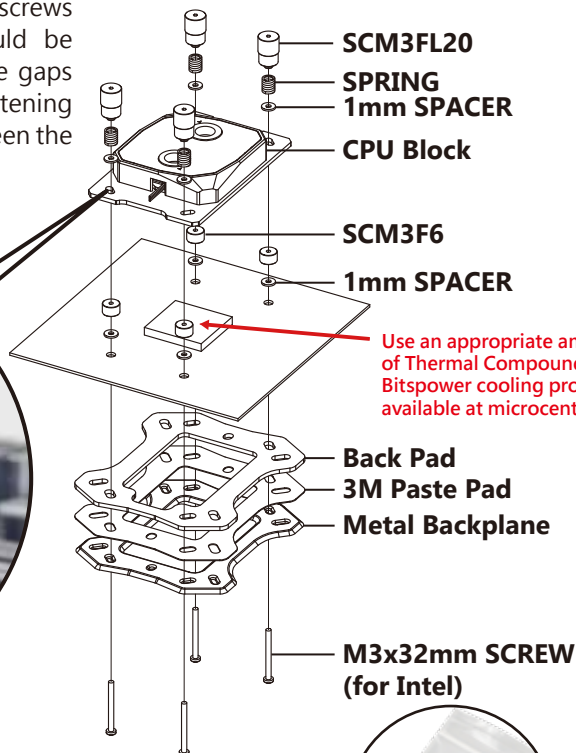
The CPU water block has a DRGB cable, which can be connected to the DRGB extension cable of the radiator fans.



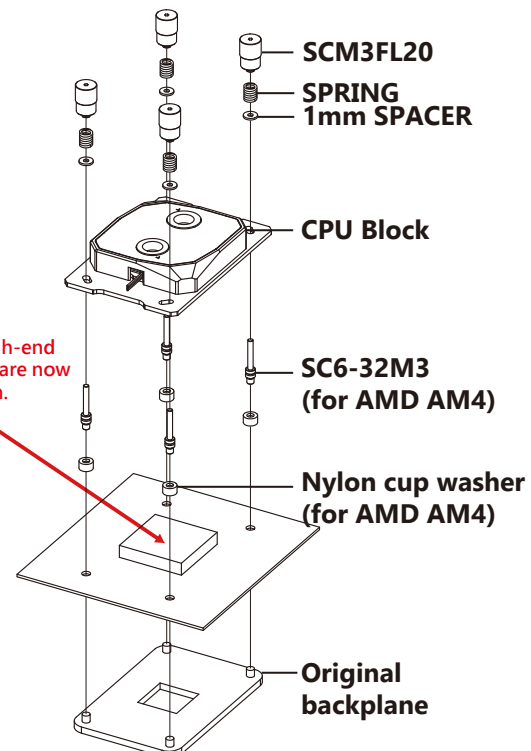
Installation

Do not over-tighten the thumb screws (SCM3FL20). The springs should be slightly compressed, with visible gaps in the spring coils. Over-tightening may result in poor contact between the water block and CPU.

EX.

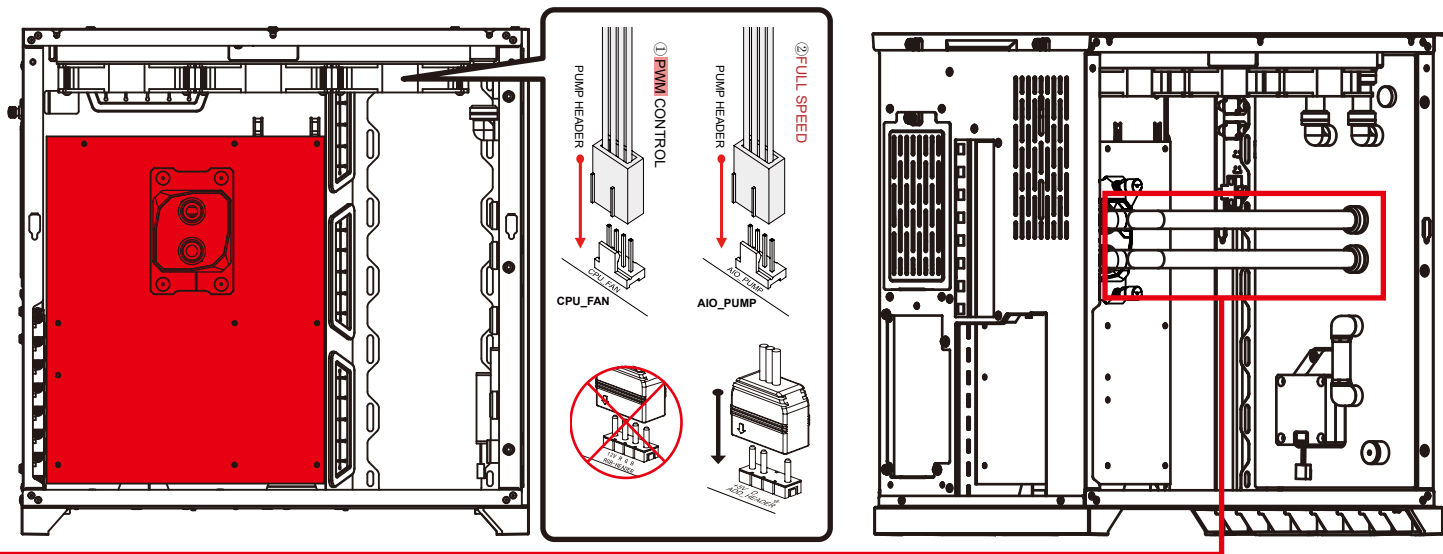


Use an appropriate amount of Thermal Compound, - high-end Bitspower cooling products are now available at microcenter.com.



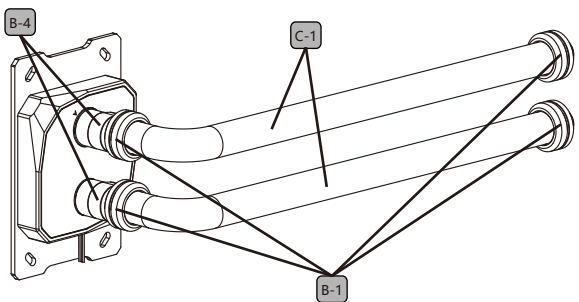
II. AMD Chipset Installation

How to install tubes for CPU



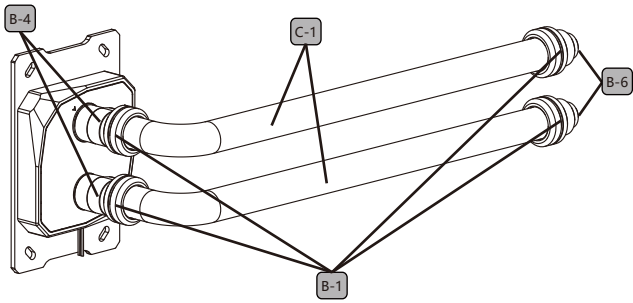
Installation 1

Motherboard			CPU	TUBE	
	Model	Brand			
1	ROG STRIX B450F GAMNG ATX	ASUS	AMD	48x263 mm	48x263 mm
2	PRIME X470-PRO AM4	ASUS			
3	TUF GAMING X570-PLUS WIFI	ASUS			
4	ROG STRIX X570-E GAMNG	ASUS			



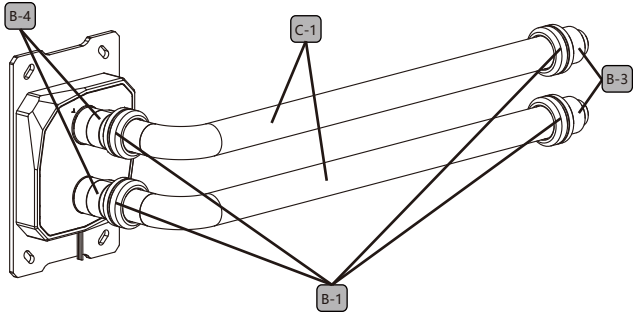
Installation 2

Motherboard			CPU	TUBE	
	Model	Brand			
1	B450 TOMAHAWK AM4 ATX	MSI	AMD	48x263 mm	48x263 mm
2	B450 AORUS PRO WIFI AM4	GIGABYTE			
3	X570 AORUS ELITE WIFI	GIGABYTE			
4	TUF GAMING X570-PLUS WIFI	ASUS			



Installation 3

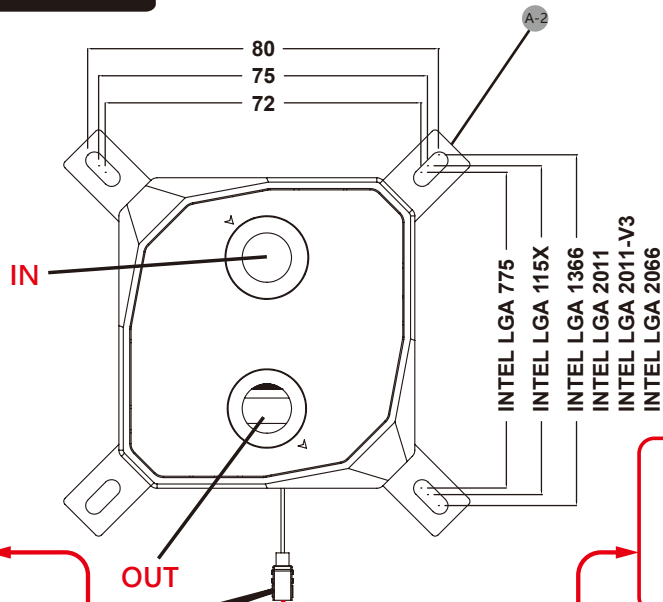
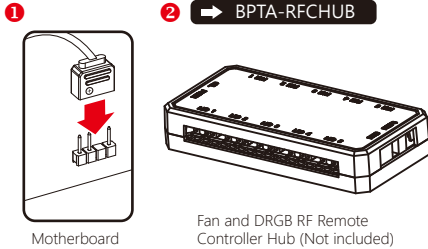
Motherboard			CPU	TUBE	
	Model	Brand			
1	MAG B550 TOMAHAWK	MSI	AMD	48x263 mm	48x263 mm



III. Intel Motherboard system

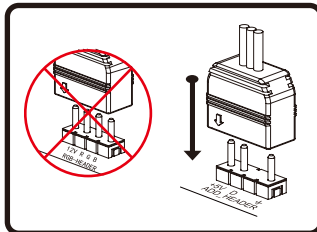
Installation

Bitspower Fan and DRGB RF Remote Controller Hub (Not included) are now available at microcenter.com
 DRGB PIN on ❶ Motherboard or ❷ other equipment.



**INTEL LGA 775
 INTEL LGA 115X
 INTEL LGA 1366
 INTEL LGA 2011
 INTEL LGA 2011-V3
 INTEL LGA 2066**

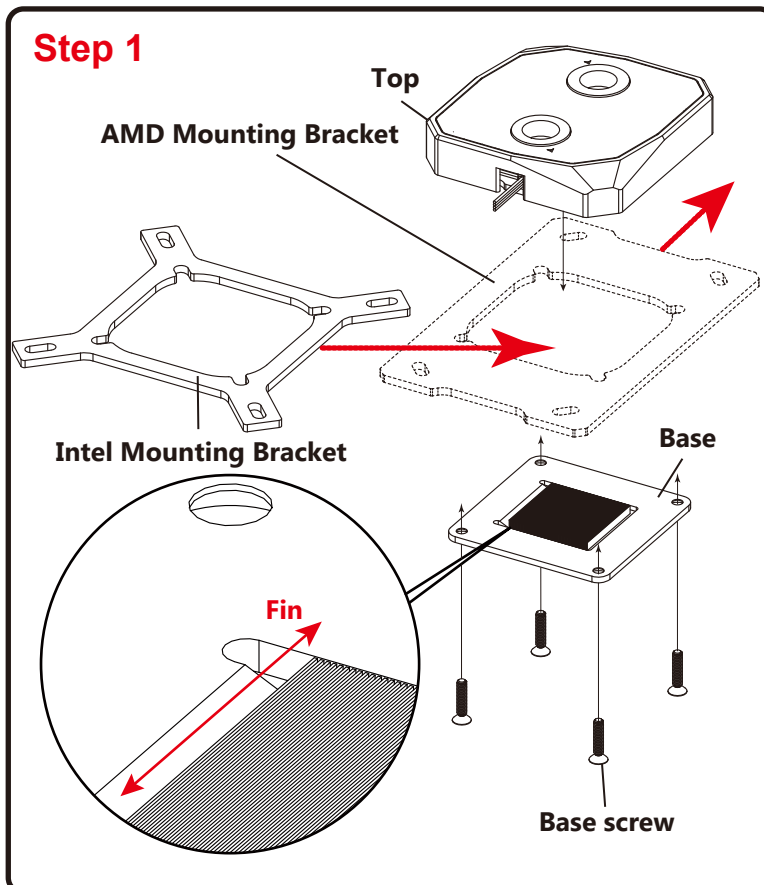
The CPU water block has a DRGB cable, which can be connected to the DRGB extension cable of the radiator fans.



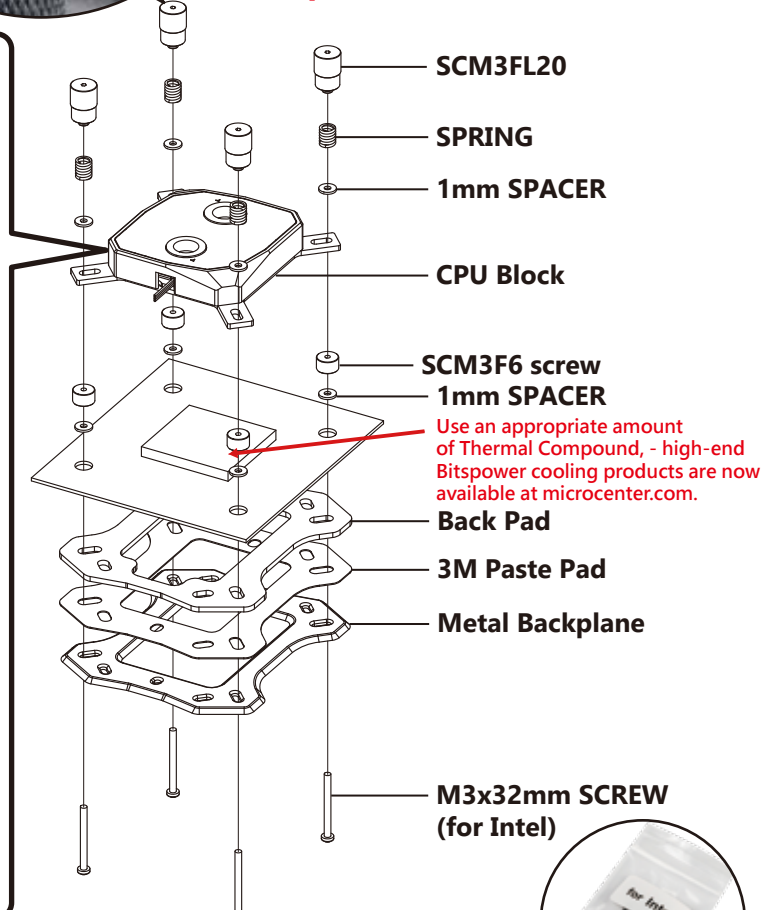
Do not over-tighten the thumb screws (SCM3FL20). The springs should be slightly compressed, with visible gaps in the spring coils. Over-tightening may result in poor contact between the water block and CPU.

Installation

Step 1

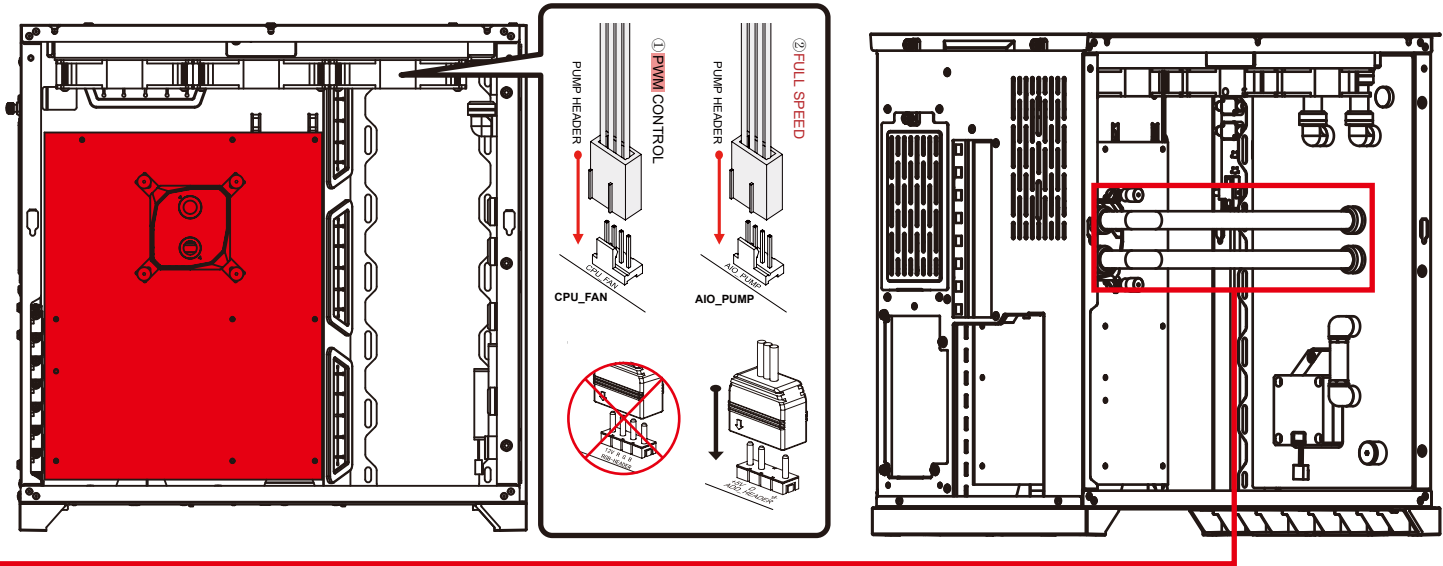


Step 2



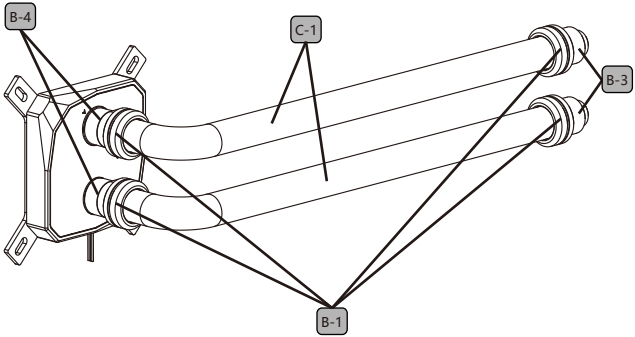
IV. Intel Chipset Installation

How to install tubes for CPU



Installation 1

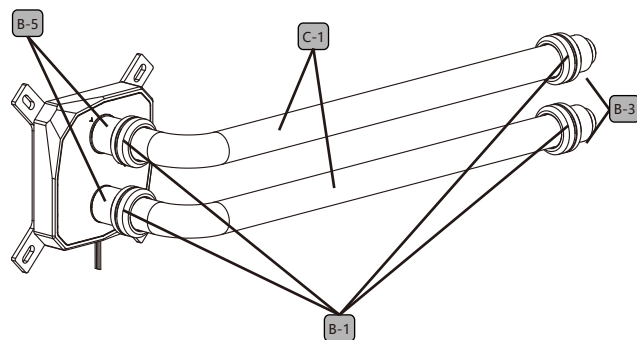
Motherboard			CPU	TUBE	
	Model	Brand			
1	MPG Z590 GAMING FORCE	MSI	INTEL	48x263 mm	48x263 mm
2	MEG Z590 ACE	MSI			
3	ROG MAXIMUS XIII HERO <i>Need to use the backplate BP-ICB (Purchase Singly).</i>	ASUS			
4	ROG STRIX Z590-A GAMING WIFI	ASUS			
5	ROG STRIX Z590-E GAMING WIFI	ASUS			
6	ROG STRIX Z590-F GAMING WIFI	ASUS			
7	PRIME Z390-A	ASUS			
8	ROG STRIX Z390-E GAMING	ASUS			
9	ROG MAXIMUS XI HERO Z390	ASUS			
10	Z590 AORUS MASTER	GIGABYTE			
11	Z590 AORUS PRO AX	GIGABYTE			
12	Z590 VISION D	GIGABYTE			
13	Z590 VISION G	GIGABYTE			
14	MSI MEG Z690 UNIFY	MSI			



Next page

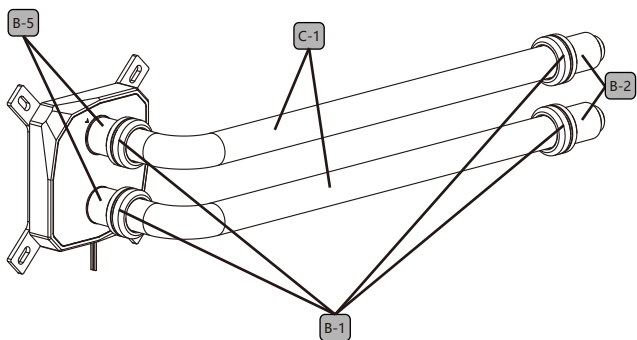
Installation 2

Motherboard			CPU	TUBE	
	Model	Brand			
1	ROG STRIX Z690-A GAMING WIFI	ASUS	INTEL	48x263 mm	48x263 mm
2	ROG STRIX Z490-E GAMING	ASUS			
3	TUF GAMING Z490-PLUS WIFI	ASUS			
4	PRIME Z490-A ATX LGA1200	ASUS			
5	ROG Z490 MAX XII HERO WIFI	ASUS			
6	PRIME Z490-P	ASUS			
7	MPG Z490 GAMING CARBON ATX	MSI			
8	MPG Z490 GAMING EDGE ATX	MSI			
9	Z490 AORUS PRO AX ATX	GIGABYTE			
10	Z490 AORUS ELITE AC ATX	GIGABYTE			
11	Z490 AORUS ULTRA ATX	GIGABYTE			
12	NZXT N7 Z590	NZXT			
13	Z590 PHANTOM GAMING 4	ASROCK			



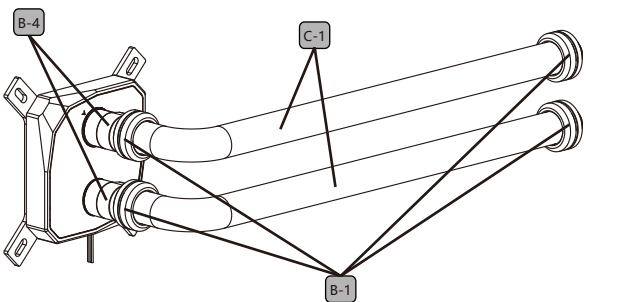
Installation 3

Motherboard			CPU	TUBE	
	Model	Brand			
1	Z590 STEEL LEGEND	ASROCK	INTEL	48x263 mm	48x263 mm
2	Z590 EXTREME WIFI 6E	ASROCK			
3	Z390 AORUS PRO WIFI ATX	GIGABYTE			



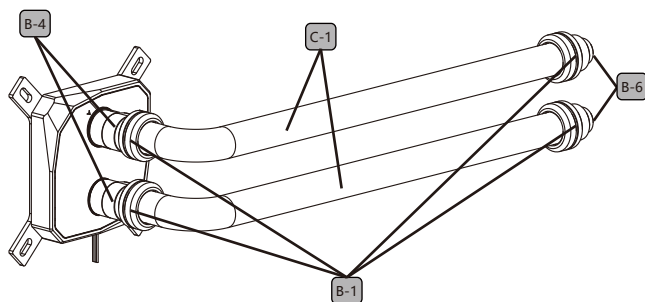
Installation 4

Motherboard			CPU	TUBE	
	Model	Brand			
1	MEG Z490 GODLIKE	MSI	INTEL	48x263 mm	48x263 mm
1	MEG Z590 GODLIKE	MSI			



Installation 5

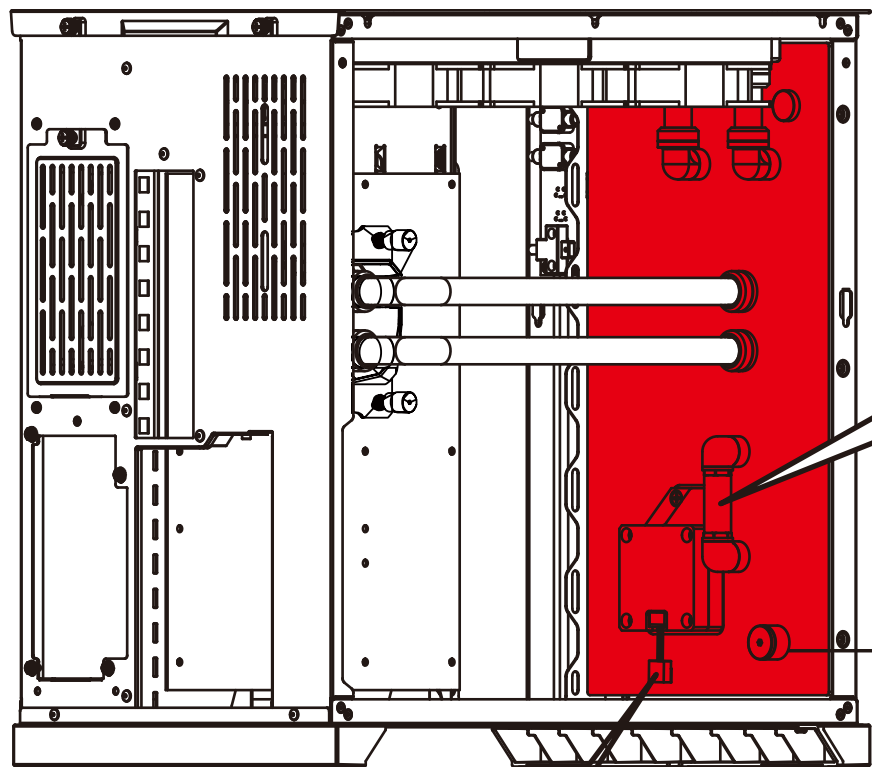
Motherboard			CPU	TUBE	
	Model	Brand			
1	TUF GAMING Z590-PLUS WIFI	ASUS	INTEL	48x263 mm	48x263 mm
2	ROG Maximus XIII Extreme (M13E)	ASUS			
3	ROG MAXIMUS XIII HERO(Z590)	ASUS			



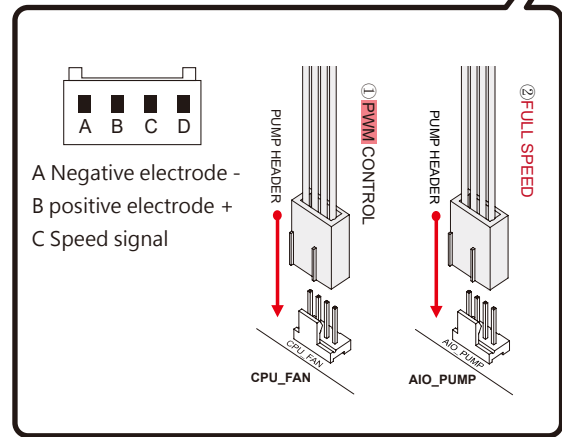
Pour the coolant into the reservoir via the water filling hole. Once the reservoir is 90% full, turn on the power supply for the pump to run and let the air exit the loop. Turn off the power supply when the reservoir is near empty. Repeat until all the air has exited the loop.

- Notice : Do not turn on the pump if the reservoir is empty.
- ⚠ Bitspower recommends that consumers add the Bitspower coolant or purified water for their water-cooling liquid. If the consumer chooses different water-cooling liquids , the resulting impurities may cause peeling of the coating on some of the hardware, water channels blockage by built-up residue, improper operation of the water pump, water tank tube breakage, and o-rings deformation leading to leakage. Any issues related to the use of inappropriate water-cooling liquid will be the responsibility of the consumer.
 - ⚠ In order to make the internal circulation of the water cooling system cleaner, and avoid the pump stuck by the precipitate, we advise you to rinse the water cooling system with distilled water in several times until the excluded water is clean.

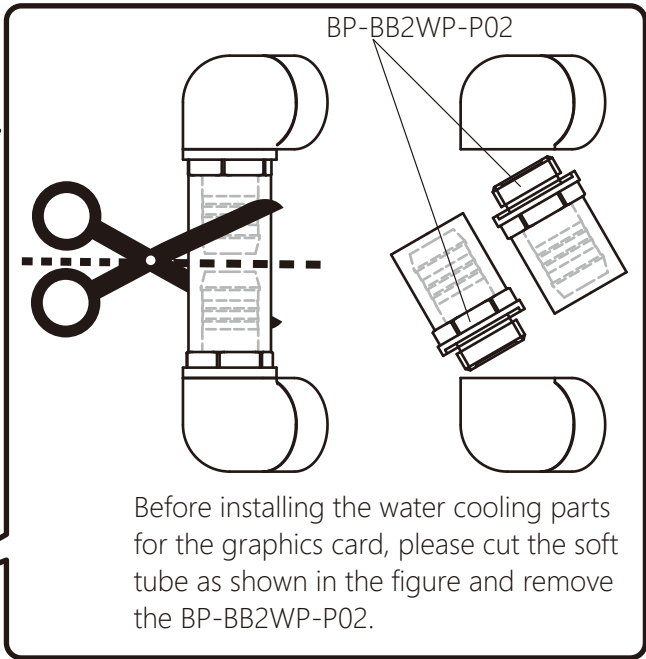
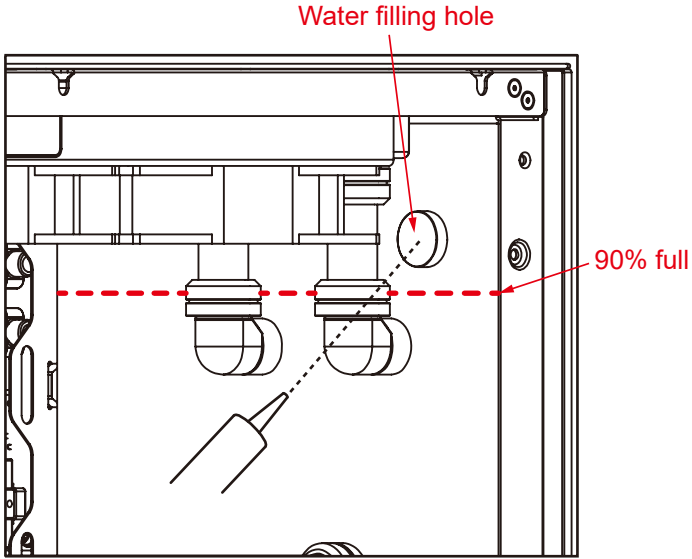
V. BPTA-O11D-AK



backplate / control panel / top cover



Pump Spec.
Rated voltage : 12V DC
Power consumption : 8.4W
Maximum flow : 460±15%L/h
Noise : ≤24dBA
PWM : Yes
MTBF : ≤15,000 hours
Warranty : 2 years



BPTA-EFW
It is recommended to install the water-exhaust fitting at the lowest point of the water cooling system.

Step 1
Unscrew the top of the water-exhaust fitting.

Step 2
Replace with the water-exhaust part. When screwing in the part, water will start to discharge, it is recommended to connect tubing beforehand to control the water outflow.

Notice

Before filling in the water, please make sure all the components are installed correctly. To prevent any leakage which may damage the PC components, please perform a 24-hour leaking test with only the pump connected to the power supply.

Bitpower reserves the right to change the product design and interpretations. These are subject to change without notice. Product colors and accessories are based on the actual product.

When using leak tester on water cooling loop, in order to avoid product damage due to excessive pressure, the input pressure should not exceed 0.5kg/cm² (Bar). If the product is damaged due to excessive pressure, it will be borne by the customer. Forbidden to use the leak tester when there is water in the loop or the pump is running.

Bitpower requires to use of distilled or pure water or Bitpower Pellucid Coolant as the water-cooling liquid. Also, the consumer can add Bitpower Dye to Pellucid Coolant for the color requirement. But please do not add any biocide by yourself. If the consumer chooses different water-cooling liquids, the resulting impurities may cause peeling off the coating on some of the hardware, water channels blockage by built-up residue, improper operation of the water pump, water tank tube breakage, and O-rings deformation or loss sealing leading to leakage. Any issues related to the use of inappropriate water-cooling liquid will be the responsibility of the consumer.

Do not turn on the pump if the reservoir is empty.